

tiempo de sentir

mimetaje: 4'

estribillo

contrabajo

$\text{♩} = 132$

Letra y musica: Alberto Ruiz Saez

Musical notation for the *estribillo* section, measures 1-8. The notation is in bass clef with a 4/4 time signature. Chord symbols are placed above the staff: G¹¹ (measures 1-4), A⁻⁷ (measures 5-6), F[#]∅ (measures 5-6), A⁻⁷ (measures 7-8), F[#]∅ (measures 7-8), and G[#]∅ (measures 7-8).

estrofa

Musical notation for the *estrofa* section, measures 14-29. The notation is in bass clef with a 4/4 time signature. Chord symbols are placed above the staff: C (measures 14-15), F[#]∅ (measures 14-15), F^Δ (measures 16-17), C (measures 16-17), F[#]∅ (measures 18-19), F^Δ (measures 18-19), B^b9 (measures 20-21), C (measures 20-21), C (measures 22-23), F[#]∅ (measures 22-23), F^Δ (measures 24-25), C (measures 24-25), F[#]∅ (measures 26-27), F^Δ (measures 26-27), B^b9 (measures 28-29), and C (measures 28-29).

punteo

Musical notation for the *punteo* section, measures 30-33. The notation is in bass clef with a 4/4 time signature. Chord symbols are placed above the staff: F[#]∅ (measures 30-31) and B^b9 (measures 32-33).

34

tiempo de sentir

contrabajo

estribillo

Letra y musica: Alberto Ruiz Saez

38 G¹¹



42 A⁻⁷

F#[∅]

A⁻⁷

F#[∅]

G#[∅]



46 A⁻⁷

F#[∅]

F^Δ

G¹¹



estrofa

51 C

F#[∅]

F^Δ

C



55 F#[∅]

F^Δ

B^{b9}

C



59 C

F#[∅]

F^Δ

C



63 F#[∅]

F^Δ

B^{b9}

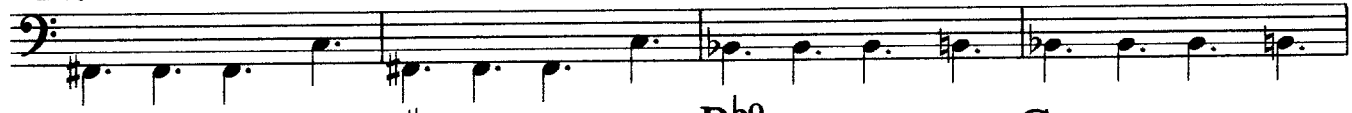
C



punteo

67 F#[∅]

B^{b9}



71 A⁻⁷

F#[∅]

B^{b9}

C



estribillo

75 G¹¹



79 A⁻⁷

F#[∅]

A⁻⁷

F#[∅]

G#[∅]



83 A⁻⁷

F#[∅]

F^Δ

G¹¹



tiempo de sentir

contrabajo

3

estribillo(solo de guitarra)

Letra y musica: Alberto Ruiz Saez

88 A-7 F#Ø A-7 F#Ø G#°

92 A-7 F#Ø FΔ G11

puente

97 F#Ø Bb9

101 A-7 F#Ø Bb9 C

estribillo

105 G11

109 A-7 F#Ø A-7 F#Ø G#°

113 A-7 F#Ø FΔ G11

estribillo

118 A-7 F#Ø A-7 F#Ø G#°

122 A-7 F#Ø FΔ

125 G11

130